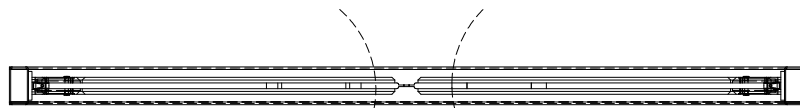
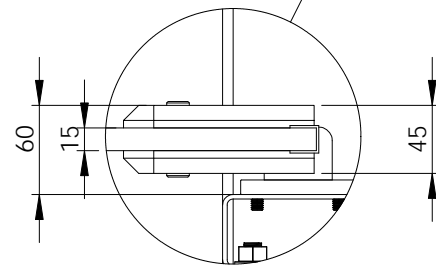


FRONT ELEVATION
SCALE 1:20



PLAN VIEW
SCALE 1:20



DETAIL EXPLODED
SCALE 1 : 5

POLYDOOR® TYPE 'S' IMPACT DOOR OPTIONS

- HOLD-OPEN OR UNI-DIRECTIONAL OPERATION
- LOWER DDA FRAMELESS VISION WINDOWS
- STAINLESS STEEL AND POWDER COATED SUB-FRAMES
- REPLACEABLE BUBBLE STYLE DOOR SEALS
- VISUAL IDENTIFICATION BUMPERS (INC SIZE & PROFILE)
- HEAT FORMED TEARDROP IMPACT BUMPERS
- OPTIONAL WINDOW SIZE/SHAPE

THE INFORMATION CONTAINED IN THIS DRAWING IS PRIVATE AND CONFIDENTIAL. NO DETAILS ARE TO BE DISCLOSED TO ANY THIRD PARTIES OR PERSONS, UNLESS SPECIFIED THIS DRAWING IS NOT ISSUED FOR CONSTRUCTION.	NAME	DATE			
	DRAWN BY	TW		19/01/2013	
LAST CHECK		20/02/2014			
APPROVED					
COMMENTS: NOT FOR MANUFACTURE SOME FIXINGS NOT SHOWN FOR CLARITY	OTHER		DESCRIPTION: TYPE 'S' - DUAL ACTION FOOD-SAFE IMPACT TRAFFIC DOOR		
	PLEASE DO NOT RELY ON THE SCALE OF THIS DRAWING. ALWAYS ASK IF IN ANY DOUBT. TOLERANCE = +/- 0.3mm / 300mm		<table border="1"> <tr> <td>SIZE A</td> <td>DWG. NO. POLYDOOR-22014-TYPE-S</td> <td>REV. 0</td> </tr> </table>	SIZE A	DWG. NO. POLYDOOR-22014-TYPE-S
SIZE A	DWG. NO. POLYDOOR-22014-TYPE-S	REV. 0			
SCALE: AS SHOWN AS SHOWN					