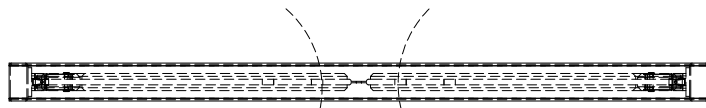
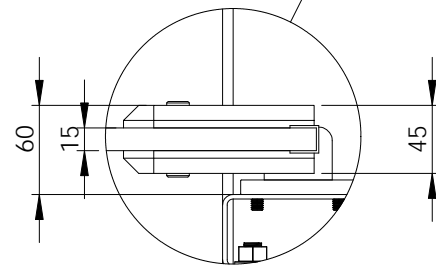


FRONT ELEVATION  
SCALE 1:20



PLAN VIEW  
SCALE 1:20



DETAIL EXPLODED  
SCALE 1 : 5

POLYDOOR® TYPE 'L' IMPACT DOOR OPTIONS

- AUTO-CLOSE OR UNI-DIRECTIONAL OPERATION
- LOWER DDA FRAMELESS VISION WINDOWS
- STAINLESS STEEL AND POWDER COATED SUB-FRAMES
- REPLACEABLE BUBBLE STYLE DOOR SEALS
- VISUAL IDENTIFICATION BUMPERS (INC SIZE & PROFILE)
- HEAT FORMED TEARDROP IMPACT BUMPERS
- OPTIONAL WINDOW SIZE/SHAPE

<p>THE INFORMATION CONTAINED IN THIS DRAWING IS PRIVATE AND CONFIDENTIAL. NO DETAILS ARE TO BE DISCLOSED TO ANY THIRD PARTIES OR PERSONS, UNLESS SPECIFIED THIS DRAWING IS NOT ISSUED FOR CONSTRUCTION.</p>	NAME	DATE							
	DRAWN BY	TW		19/01/2013					
	LAST CHECK			20/02/2014					
	APPROVED								
<p>COMMENTS:</p> <p>NOT FOR MANUFACTURE SOME FIXINGS NOT SHOWN FOR CLARITY</p>	OTHER		<p>DESCRIPTION:</p> <p><b>TYPE 'L' - DUAL ACTION IMPACT LOADING BAY DOOR</b></p>						
	<p>PLEASE DO NOT RELY ON THE SCALE OF THIS DRAWING. ALWAYS ASK IF IN ANY DOUBT.</p> <p>TOLERANCE = +/- 0.3mm / 300mm</p>		<table border="1"> <tr> <td>SIZE</td> <td>DWG. NO.</td> <td>REV.</td> </tr> <tr> <td><b>A</b></td> <td>POLYDOOR-22016-TYPE-L</td> <td>0</td> </tr> </table>	SIZE	DWG. NO.	REV.	<b>A</b>	POLYDOOR-22016-TYPE-L	0
	SIZE	DWG. NO.	REV.						
<b>A</b>	POLYDOOR-22016-TYPE-L	0							
SCALE: AS SHOWN		AS SHOWN							