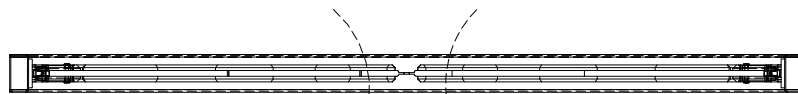
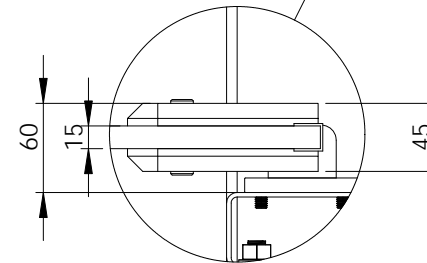


FRONT ELEVATION
SCALE 1:20



PLAN VIEW
SCALE 1:20



DETAIL EXPLODED
SCALE 1 : 5

POLYDOOR® TYPE 'P' IMPACT DOOR OPTIONS

- HOLD-OPEN OR UNI-DIRECTIONAL OPEN/CLOSE OPERATION
- LOWER DDA FRAMELESS VISION WINDOWS
- STAINLESS STEEL AND POWDER COATED SUB-FRAMES
- REPLACEABLE BUBBLE STYLE DOOR SEALS
- VISUAL IDENTIFICATION BUMPERS (INC SIZE & PROFILE)
- HEAT FORMED TEARDROP IMPACT BUMPERS
- OPTIONAL WINDOW SIZE/SHAPE

THE INFORMATION CONTAINED IN THIS DRAWING IS PRIVATE AND CONFIDENTIAL. NO DETAILS ARE TO BE DISCLOSED TO ANY THIRD PARTIES OR PERSONS. UNLESS SPECIFIED THIS DRAWING IS NOT ISSUED FOR CONSTRUCTION.	NAME	DATE						
	DRAWN BY	TW		19/01/2013				
LAST CHECK		15/04/2014						
APPROVED								
COMMENTS: NOT FOR MANUFACTURE SOME FIXINGS NOT SHOWN FOR CLARITY	OTHER		DESCRIPTION: TYPE 'P' - DUAL ACTION WATERPROOF LEISURE SWIMMING POOL DOOR					
	PLEASE DO NOT RELY ON THE SCALE OF THIS DRAWING. ALWAYS ASK IF IN ANY DOUBT. TOLERANCE = +/- 0.3mm / 300mm		<table border="1"> <tr> <td>SIZE</td> <td>DWG. NO.</td> <td>REV.</td> </tr> <tr> <td>A</td> <td>POLYDOOR-22016-TYPE-P</td> <td>0</td> </tr> </table>	SIZE	DWG. NO.	REV.	A	POLYDOOR-22016-TYPE-P
SIZE	DWG. NO.	REV.						
A	POLYDOOR-22016-TYPE-P	0						
SCALE: AS SHOWN AS SHOWN								